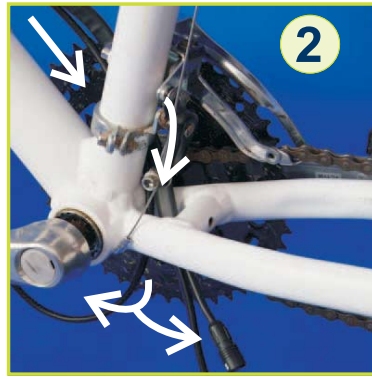


Installation Guide

BionX



Mount tire + free wheel (8-speed max) on BionX rim.



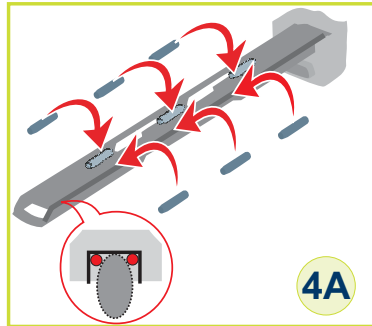
Pass the cabling on pedal side (therefore less visible).



Put protective tape to avoid scratching the frame.



Screw battery slide. IMPORTANT: Please use screws included in BionX kit.



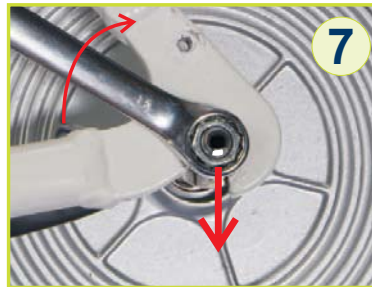
Use shims (from BionX toolbox) for drop shaped frames.



Put on frame and gently slide down towards the back.



Insert wheel and make sure the blocker is engaged in the drop-out and that the nutch is pointing towards the ground.



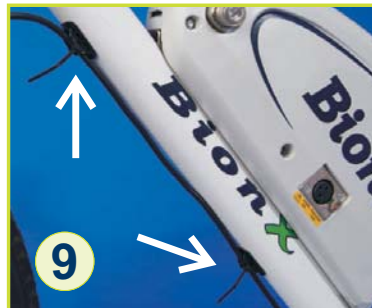
Screw the wheel and make sure the nutch is still pointing towards the ground.



If the nutch is not pointing towards the ground, please use the puller (from BionX tool box) to free the blocker and then use a screw driver to adjust the nutch to the right angle.



Connect, use tie-wraps and velcros to secure cabling.



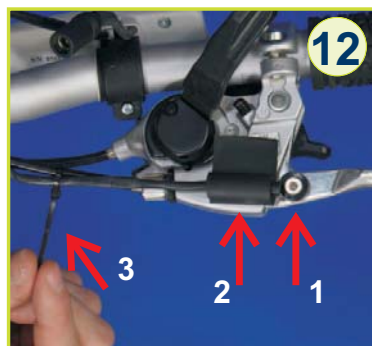
Attach cabling to the frame.



Install controller.



Clean underneath the brake lever with alcohol, acetone or brake cleaner and stick or screw magnet near the joint.



Install magnetic switch (regenerative braking).



Please make sure the "G" comes on when you brake and goes away when you release the rear handbrake.



Test ride.

For more detail visit the web site see; www.bionx.ca; Dealer tools; Intranet