

Instructions for wiring power lock and

The main operation is to open the battery cover b
respectively connected to two white lines on batt



Step 1:

Open the battery lock on frame

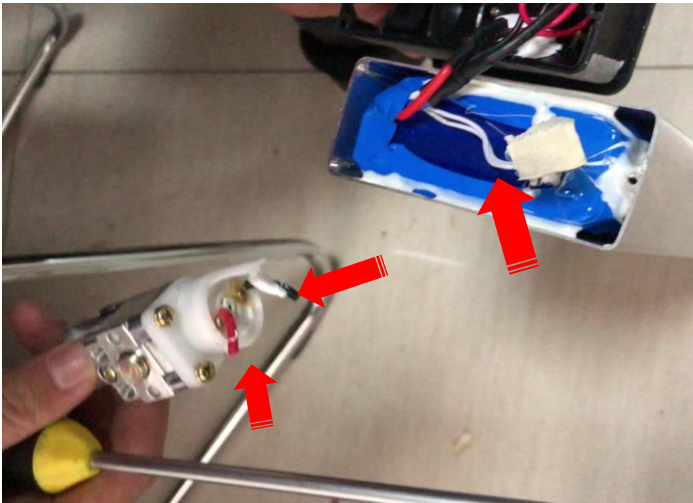
Insert the key under the frame and open the battery lock. Rotate the keys twice until the battery lock pin is indented to the frame. Then take out the key



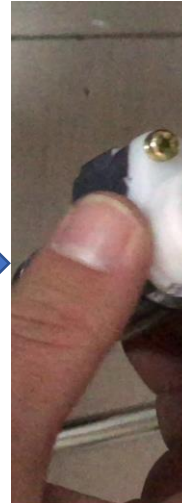
Step 2:

Remove the

Folding th
carefully



Step 5: Take out the power lock. Find 1 black and 1 red wire connector on the lock. Find 2 white wire connectors on the battery and separate them



Step 6: Cor
line on the
on the batt
insulating

网上操作视频链接:

battery

board, Then Use the black line and red line on power lock
ery .



Remove the battery

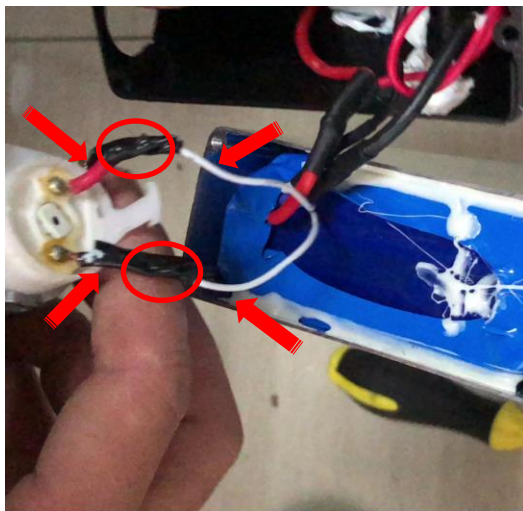
Remove the battery from the frame and remove the battery



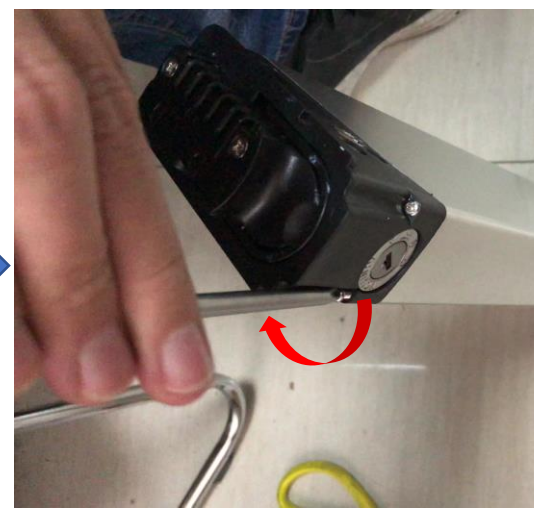
Step 3:

Remove the battery cover board

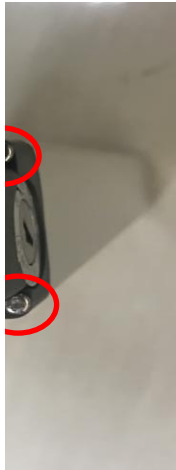
Use a cross screwdriver to open 3
the battery cover board



Connect one black line and one red
power lock to two white lines
battery, and firmly wrap them with
tape



Step 7: Install the power lock board
in original position, tighten the 2
the side of the battery lock board
previously removed, then cover the
cover board and tighten the 3 screws
previously removed



第4步:

Take out the battery lock.

Use a cross screwdriver to loose 2 screws on the side of cover board



Step 8: Finally charge the battery for 4 to 8 hours, The battery can be normal used after charger indicator light from red turns to green .

2 screws on

back to its
screws on
board which
the battery
screws which